



polypepp

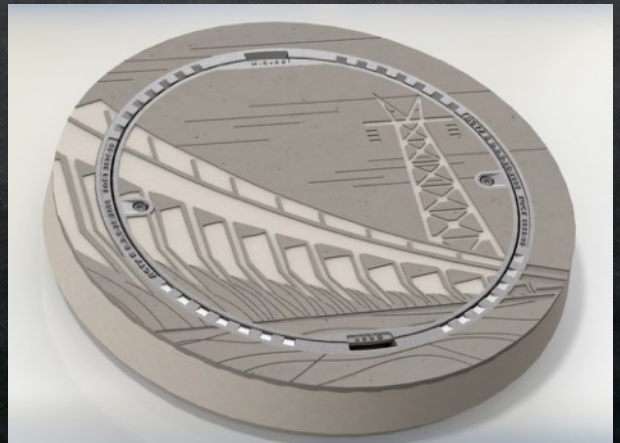
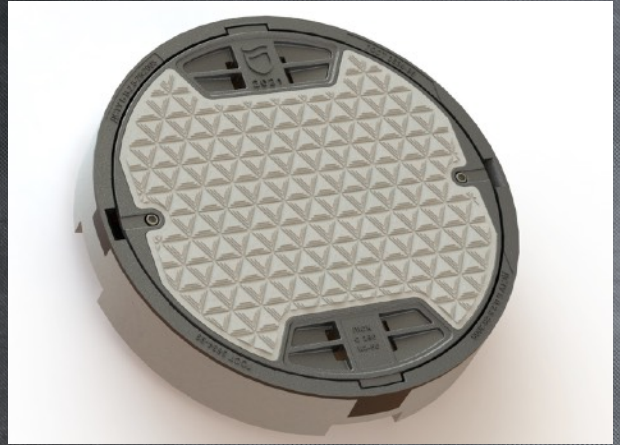
СУЧАСНІ ТЕХНОЛОГІЇ

---

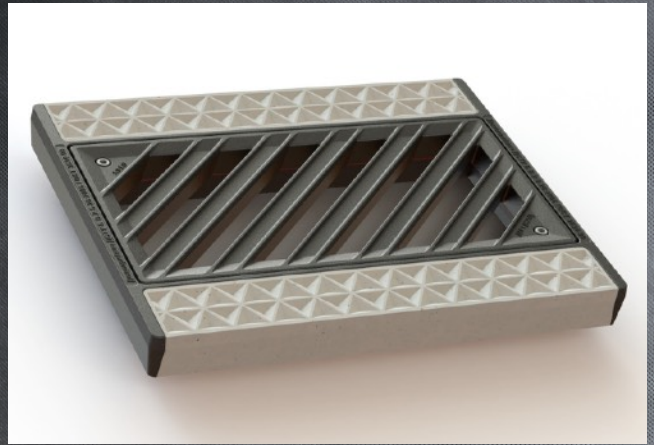
CITY INFRASTRUCTURE PRODUCTS

Heavy trunk hatches type C250 (25 tons) and D400 (40 t). All products comply with DSTU B.V.2.5. - 26:2005 and have a certificate of conformity.

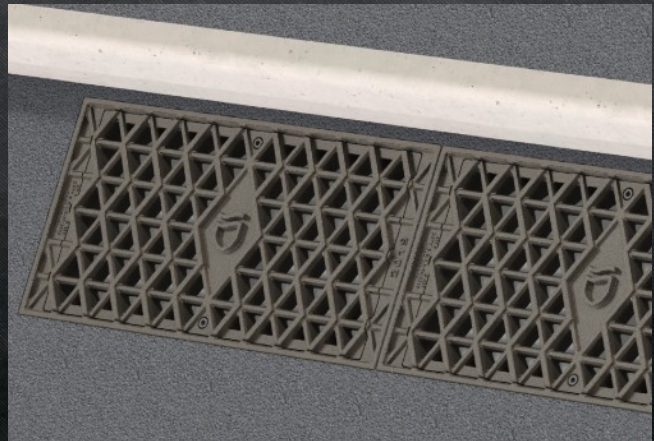
Hatches are made of SCH20 cast iron and high-strength reinforced concrete of a grade not lower than M500. They have A2DIN912 stainless steel locks and protection against flipping of the lid.



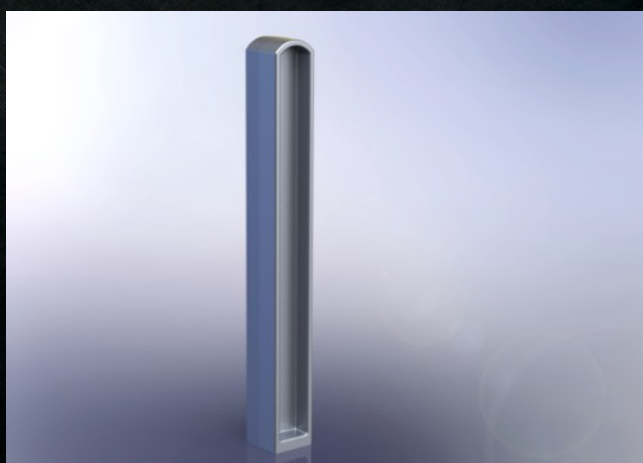
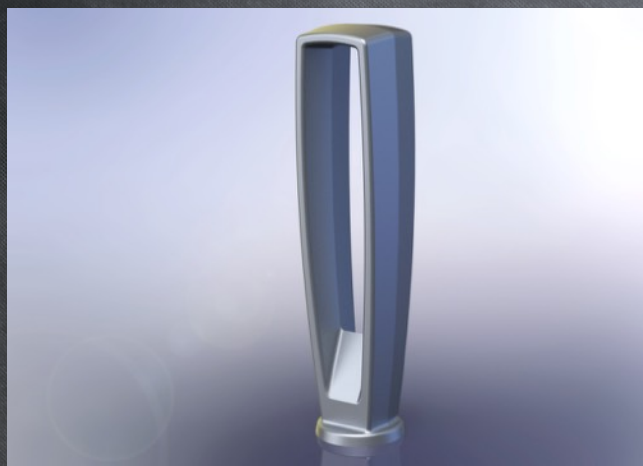
Gutters type S250 (25 t) and D400 (40 t). All products comply with DSTU B.V.2.5. - 26:2005 and have a certificate of conformity.



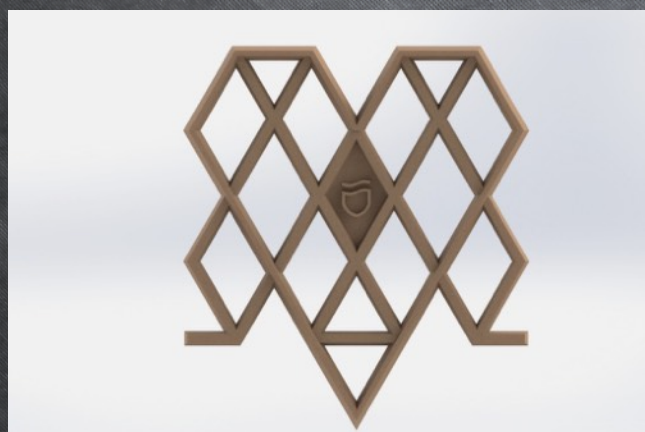
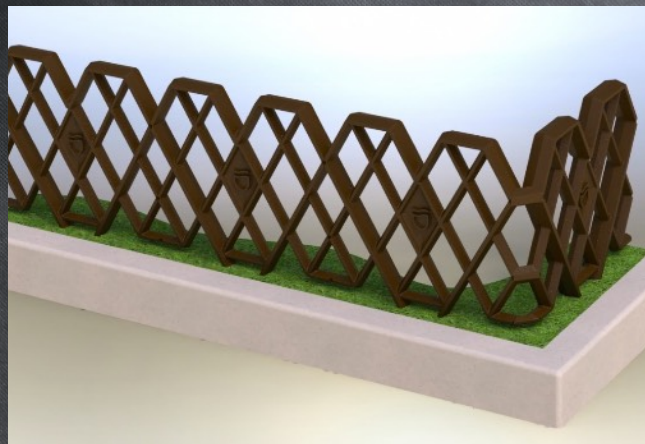
Drain inlets are made of SCH20 cast iron and high-strength reinforced concrete of a grade not lower than M500. They have A2DIN912 stainless steel locks.



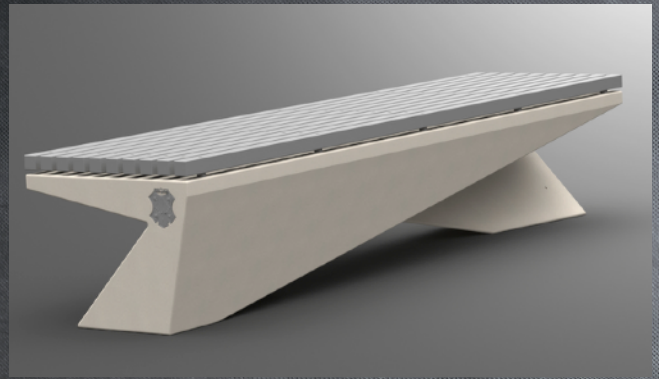
Objects such as security posts are quite an important element ensuring safety. They can be made of several types of materials: concrete, metal, polymer or sand-polymer mixture.



Decorative fences for green areas. This type of fence has several functions. They protect lawns and plantings, aesthetically demarcate space, and affect the safety of pedestrians and motorists.



One of the most important components of a successful and favourable city life is its infrastructure. Convenience, safety and aesthetics of individual facilities and infrastructure elements are the three main aspects that guide us when creating any solutions for citizens.

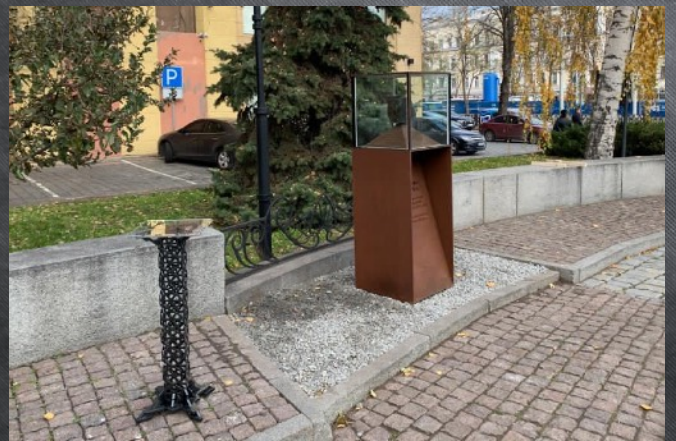
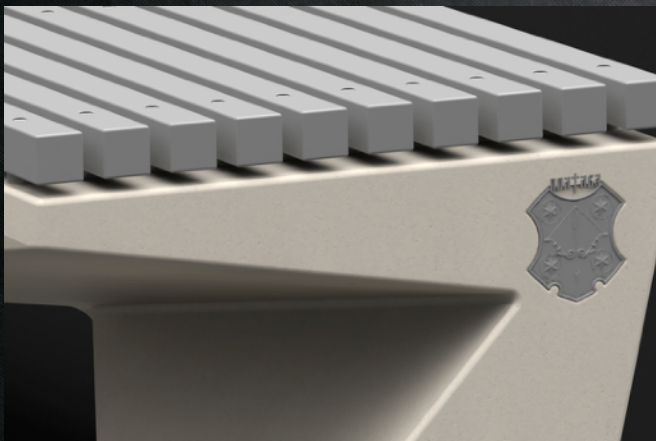


Our company is ready to offer a range of services to make the premises better in any of its aspects.

We can develop and implement any element or object of urban infrastructure, from decorative fence to pavilions or sports grounds.



Our company has developed and implemented art objects, historical monuments, outstanding landmarks and much more.



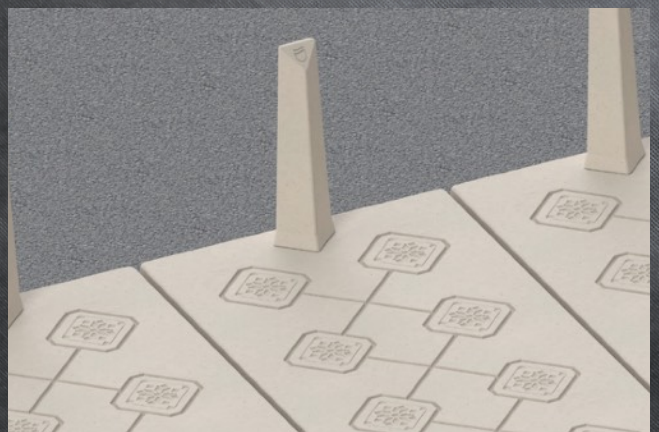
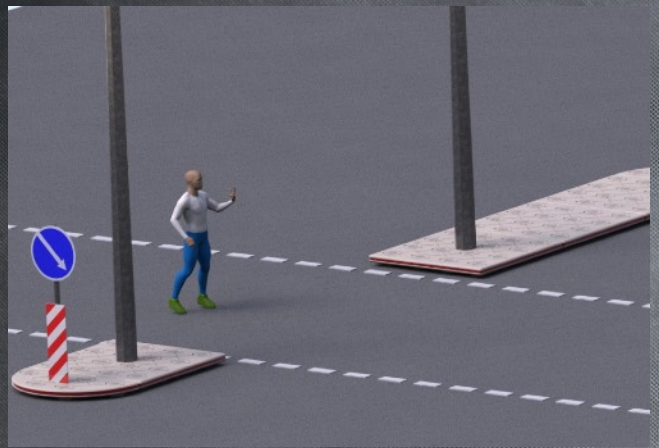
Уламок чорного  
лабрадориту –  
фрагмент хреста  
з могили Олександра  
Миколайовича Поля

Хрест було зруйновано за часів  
ліквідації Севастопольського  
цвинтаря наприкінці 1940-х років.

Знайдено під час археологічних  
досліджень у липні 2020 року.

A few words about safety. We also use non-standard engineering solutions in creation of common things. Each of us crosses an intersection every day either as a driver or as a pedestrian. Safety islands developed by us have a number of advantages over standard solutions:

- We do not destroy the road surface.
- The island is assembled in one work shift.
- Possibility of installing island lighting around the perimeter.
- The modular system allows you to mount the island of any configuration.
- Fast dismantling in case of change of the traffic scheme.
- Aesthetic appearance.

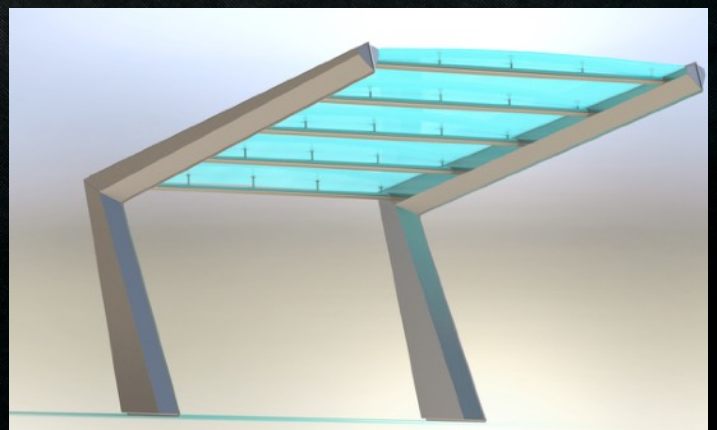
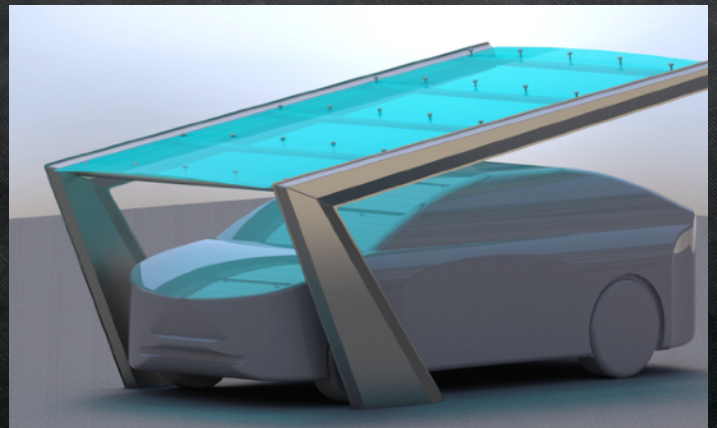
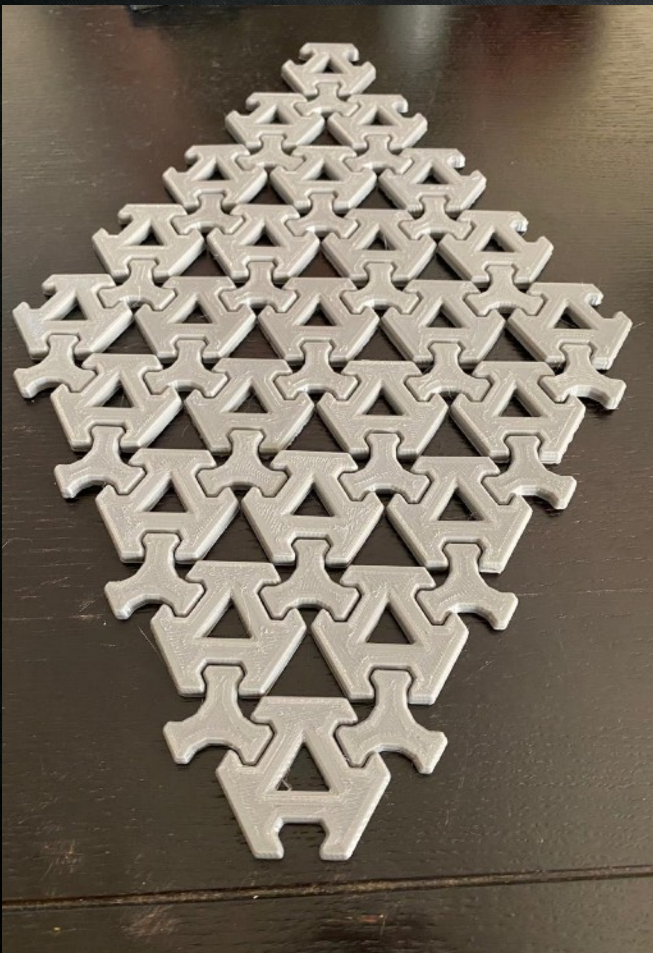
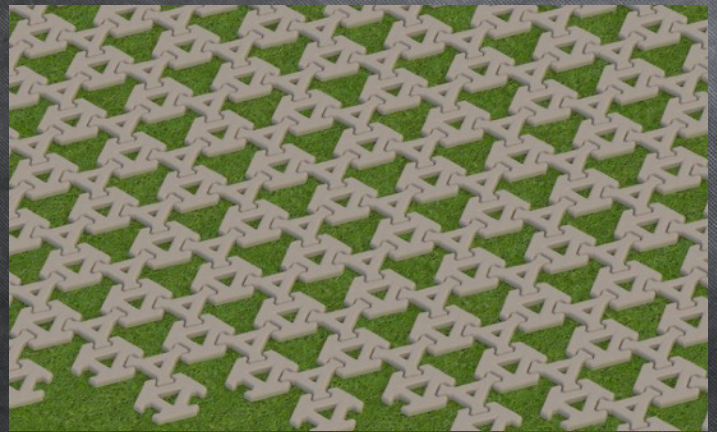




Eco-parking and anti-slip systems. Improvement of the city is one of the priority areas today. But at the same time, the problem of lack of parking spaces is becoming more and more widespread.

We offer effective systems that allow you to preserve the green spaces of the city as much as possible, while increasing the number of parking spaces.

The same technology can be applied as an anti-slip system for the construction of interchanges, embankments, hills, etc. The simple and quick installation allows this technology to be used even in high traffic areas.



[www.polyrepp.com](http://www.polyrepp.com)



polyrepp

ЗРОБЛЕНО В УКРАЇНІ